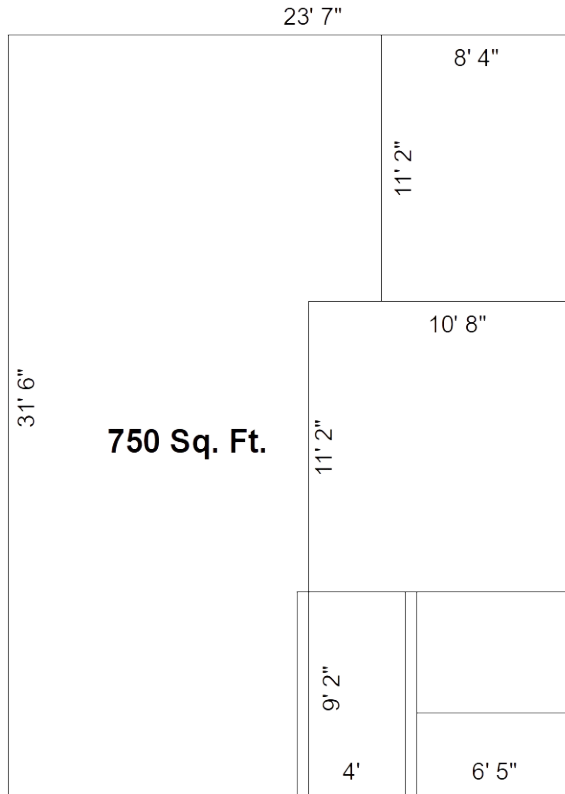




Retail Space: Unit 1



- Established Commercial Center in Downtown Manchester.
- Landmark Location on Scenic Raisin River.
- High Customer Traffic Main Floor Location.
- Outside Display Window.
- In-unit Hot & Cold Water Service and Rest Room.
- Exterior Main Street and Directory Signs.
- Convenient, private parking.
- Water & sewer included.
- External maintenance included (snow removal, lawn care, trash, etc).
- Individually controlled heating and air conditioning.
- High-speed Internet access available.
- Mill Porch and Downstairs Atrium available for special events.
- Refundable security deposit.
- Rental terms available upon request.

Rental Info: 734-657-3690
karl@manchestermill.com

Updated: 31-DEC-2020