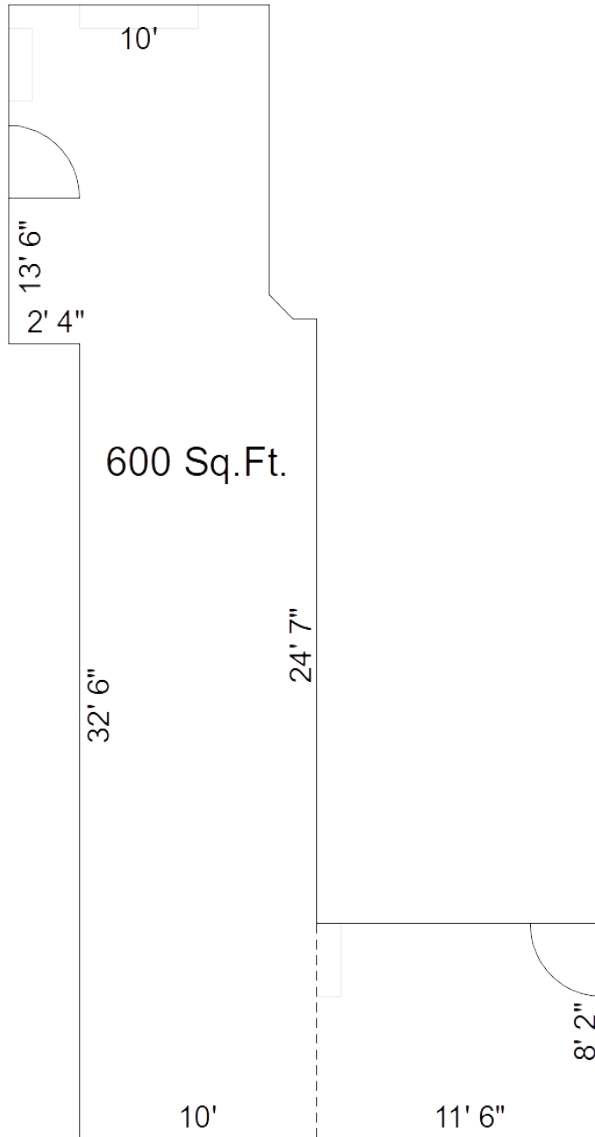




Retail Space: Unit 13



- Established Commercial Center in Downtown Manchester.
- Exclusive Main Street Entry with scenic river-front deck.
- High customer traffic, Main Street location.
- Store signs on Main Street and at Main Entrance.
- Convenient, private parking.
- External maintenance included (snow removal, lawn care, trash, etc).
- Building central air conditioned.
- Separate heating furnace.
- Tenant restroom.
- Porch and Atrium available for special events.
- Refundable security deposit.
- Rental terms & conditions – available upon request.

Rental Info: 734-657-3690
karl@manchestermill.com

Updated: 10-DEC-2020