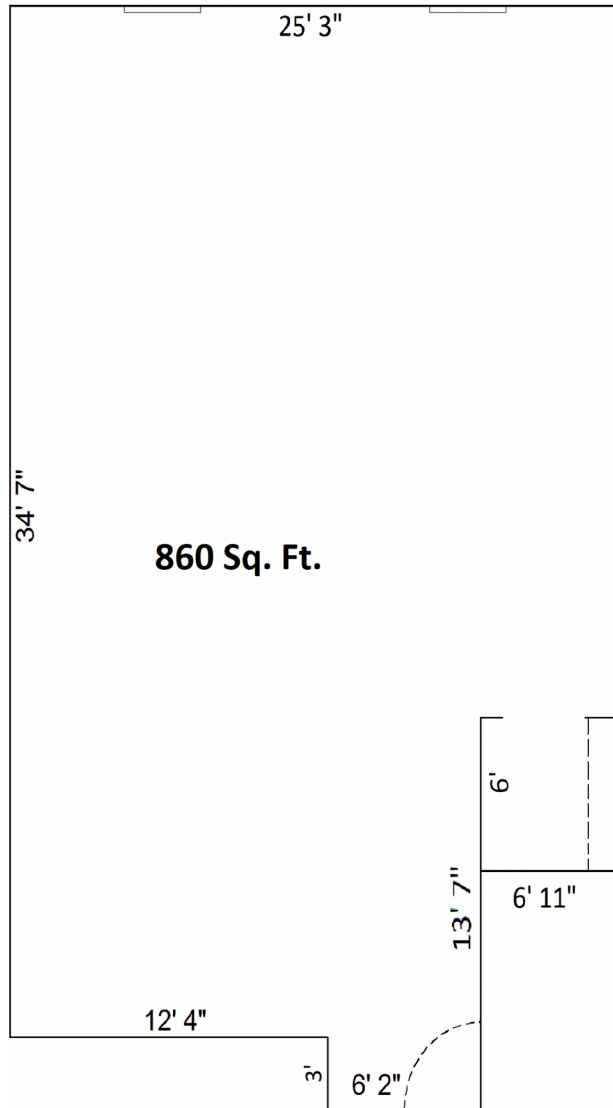




Retail Space: Unit 4



- Established Commercial Center in Downtown Manchester.
- Landmark Location on Scenic Raisin River.
- High Customer Traffic Main Floor Location.
- Exterior Main Street and Directory Signs.
- Convenient, Private Parking.
- Air conditioning, heating, water and electricity included.
- External maintenance included (snow removal, lawn care, trash, etc).
- Tenant restroom.
- Mill Porch and Downstairs Atrium available for special events.
- Refundable security deposit.
- Rental terms & conditions available upon request.

Rental Info: 734-657-3690
karl@manchestermill.com

(Updated: 21-DEC-2020)