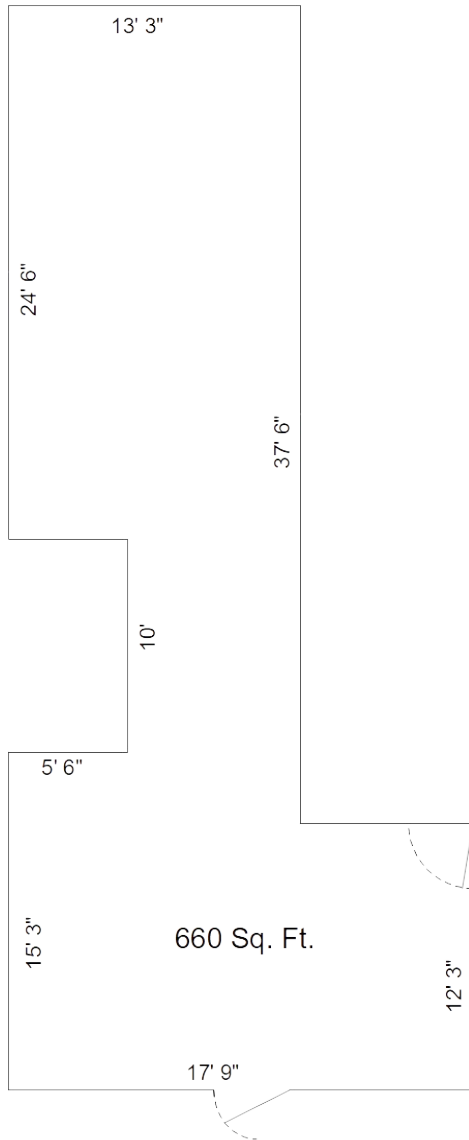




Manchester Mill^{LLC}

201 E. Main St. • PO Box 383 • Manchester, MI 48158

Retail Space: Unit 5



- Established Commercial Center in Downtown Manchester.
- Landmark Location on Scenic Raisin River.
- High Customer Traffic Main Floor Location with Dedicated Entrance.
- Exterior Main Street and Directory Signs.
- Outside Windows on 3 sides.
- Convenient private parking.
- External maintenance included (snow removal, lawn care, trash, etc).
- Building centrally heated & air conditioned.
- Tenant restroom.
- High-speed Internet access available.
- Mill Porch and Downstairs Atrium available for special events.
- Refundable security deposit.
- Rental terms & conditions available upon request.

Rental Info: 734-657-3690
karl@manchestermill.com

Updated: 15-JAN-2021