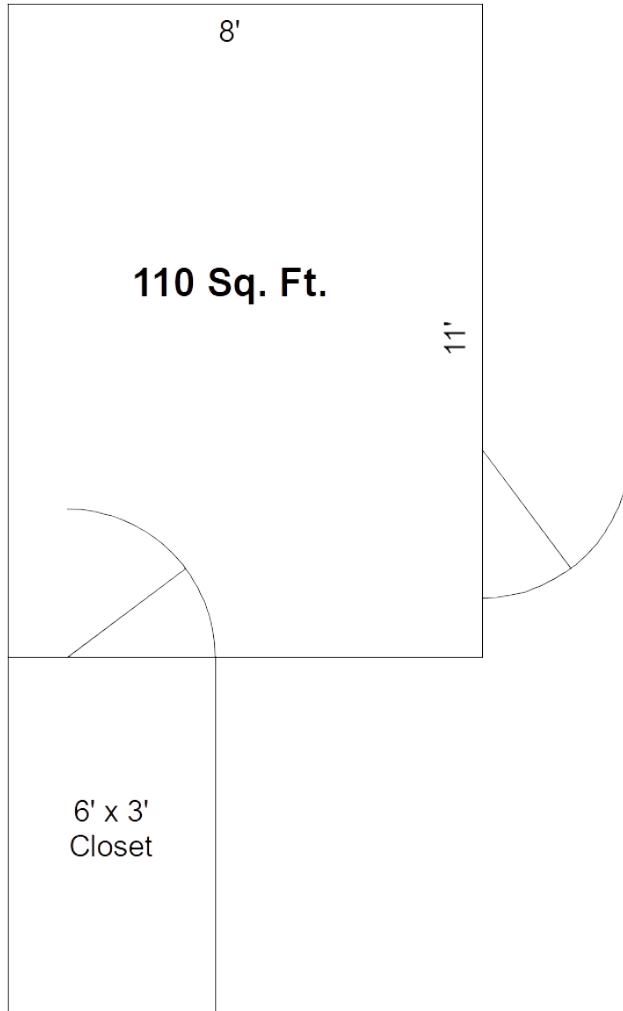




Office Space: Unit 6



- Established Commercial Center in Downtown Manchester.
- Landmark Location on Scenic Raisin River.
- Exterior Main Street and Directory Signs.
- Convenient private parking.
- External maintenance included (snow removal, lawn care, trash, etc).
- Building centrally heated & air conditioned.
- Tenant restroom.
- High-speed Internet access available.
- Mill Porch and Downstairs Atrium available for special events.
- Refundable security deposit.
- Rental terms & conditions available upon request.

Rental Info: 734-657-3690
karl@manchestermill.com

Updated: 31-DEC-2020