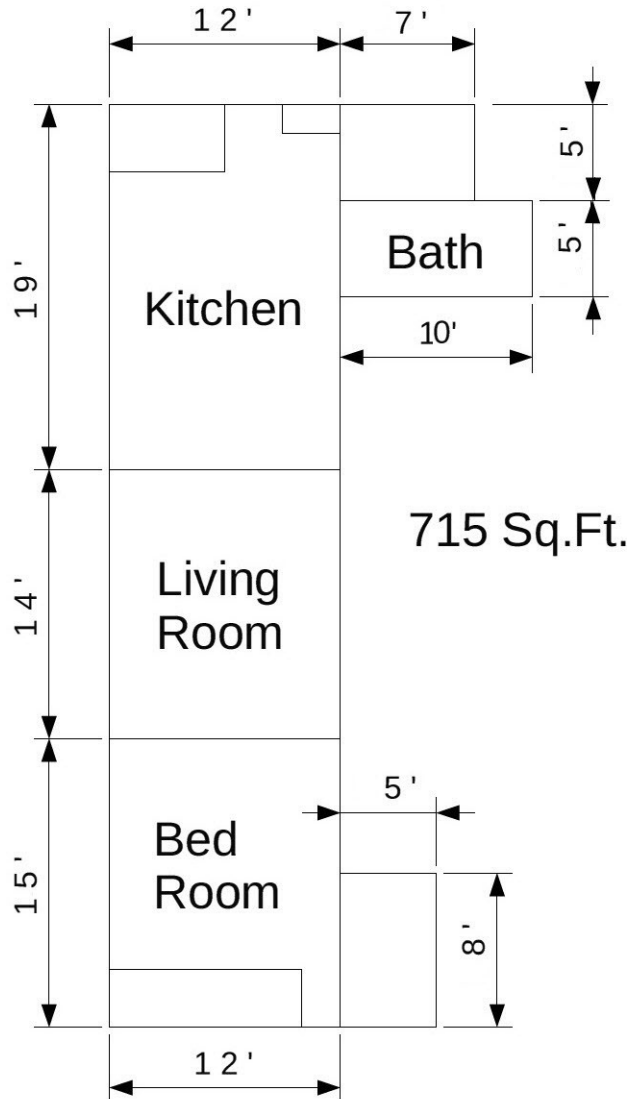




Apartment: Unit 7



- In Downtown Manchester.
- One bedroom.
- Convenient private parking.
- Private deck overlooking scenic Raisin River.
- External maintenance included (snow removal, lawn care, trash, etc).
- High-speed Internet access available.
- Mill Porch and Downstairs Atrium available for special events.
- Bathroom with shower.
- Refundable security deposit.
- Rental terms & conditions available upon request.

Rental Info: 734-657-3690
karl@manchestermill.com