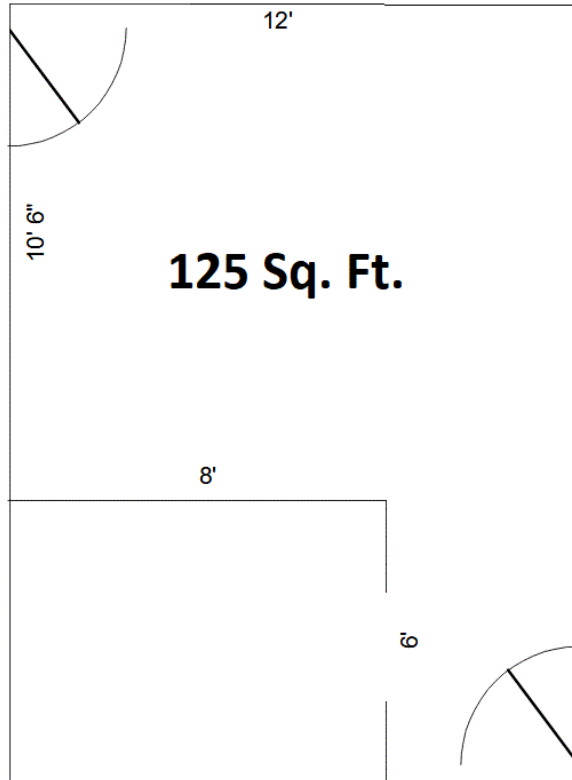




Retail Space: Unit 9



- Established Commercial Center in Downtown Manchester.
- Landmark Location Overlooking Scenic Raisin River.
- Convenient private parking.
- Exterior Signs with Main Street and Main Entry Exposure.
- External maintenance included (snow removal, lawn care, trash, etc).
- Building centrally air conditioned.
- Separate heating furnace.
- Tenant restroom.
- High-speed Internet access available.
- Mill Porch and Downstairs Atrium available for special events.
- Refundable security deposit.
- Rental terms & conditions available upon request.

Rental Info: 734-657-3690
karl@manchestermill.com